

QUOTATION FOR INTERIOR WORKS					
SL NO	DESCRIPTION	UNIT	QTY	RATE	AMOUNT
A	<b>FLOORING WORKS</b>				
1	<b>RCC</b> : Providing and laying in position Reinforcement cement concrete (RCC) of specified grade Including the cost of centring and shuttering. The ration of the RCC will be of M15 Ratio ( 1:2:4) (1 Cement: 2 coarse sand : 4 graded stone aggregate 20 mm nominal size).The area will be finishes with all necessary finishes etc as required. The rate is inclusive of curing ,shuttering etc as required .(Location : FLOORING FOR GENERATOR )	M3	1.90		-
2	<b>CARPET FLOORING</b> :Supply and installation of DESSO Carpets tiles of 5.5mm with the effective pile thickness of 2.2mm . The type of manufacture is confirm to ISO2424 . The dimension of the tiles will be of 500x500mm . The primary backing is covered with polyester fleece and secondary backing is DESSCO Eco base which can be used in the 33 heavy commercial areas . The surface will cleaned from dart , dent and all other foreign objects etc as required . (Location : CHAIRMAN ROOM)	SqFt	213.00		-
3	<b>CARPET SKIRTING</b> :Supply and installation of DESSO Carpets tiles of 5.5mm with the effective pile thickness of 2.2mm . The type of manufacture is confirm to ISO2424 . The dimension of the tiles will be of 500x500 mm . The primary backing is covered with polyester fleece and secondary backing is DESSCO Eco base which can be used in the 33 heavy commercial areas . The surface will cleaned from dart , dent and all other foreign objects etc as required . (LOCATION : Wall area , ± 100mm High )(Location : CHAIRMAN ROOM)	SqFt	21.00		-
<b>TOTAL FOR FLOORING WORKS :</b>					-
B	<b>PAINTING WORKS</b>				
1	<b>Emulsion Paint (Walls )</b> : Supply and applying of 2 coat of emulsion paint with all necessary base preparation etc as required . Their will be 2 layer of Top coat interior emulsion will be applied . The surface will be free from dart ,pores etc as required.(Rate is inclusive of all charges of scaffolding , transportation .Safety equipment's etc as required )( Location : Ground Floor )	SqFt	2,765.00		-
2	<b>Emulsion Paint (Walls )</b> : Supply and applying of 1 coat of emulsion paint with all necessary base preparation etc as required . Their will be 1 layer of Top coat interior emulsion will be applied . The surface will be free from dart ,pores etc as required.(Rate is inclusive of all charges of scaffolding , transportation .Safety equipment's etc as required )( Location : 2 <sup>nd</sup> Floor )	SqFt	2,765.00		-
3	<b>Emulsion Paint (Ceiling )</b> : Supply and applying of 1 coat of emulsion paint with all necessary base preparation etc as required . Their will be 1 layer of Top coat interior emulsion will be applied . The surface will be free from dart ,pores etc as required.(Rate is inclusive of all charges of scaffolding , transportation .Safety equipment's etc as required )	SqFt	2,400.00		-
<b>TOTAL FOR PAINTING WORKS :</b>					-
C	<b>GLASS &amp; STICKER WORKS</b>				
1	<b>Glass Partition</b> : Supply and installation of ±10mm Thk toughened glass partition fixed towards anodized / Powder Coated Aluminium section as per the design .The Sections will be fixed with necessary supports as required . The Top Channel will be fixed towards the ceiling and bottom channel will be screwed to the floor with necessary hardware's etc as required (Location:Near Reception area )	SqFt	95.00		-
2	<b>Glass Door (Size :1000x2100mm )</b> : Supply and installation of ±10mm Thk toughened glass door with all necessary hardware's such as Floor Springs , Top & Bottom Patch , Handles & Lock etc as required .(Location:Near Reception area )	No's	1.00		-
3	<b>Frosted Film</b> : Supply and applying of approved shade of frosted film as per the design .The Film will be applied with all necessary surface preparation and finishes etc as required .(Location:Near Reception area )	SqFt	63.00		-
<b>TOTAL FOR PARTITION &amp; STICKER WORKS :</b>					-

D	JOINERY WORKS				
1	<b>RECEPTION TABLE :</b> Fabrication and installation of reception table of approved size as per the design . The Table will be made of $\pm$ 12mm Thk Plywood with approved shade of laminate as per the design . The user end of the table will be at $\pm$ 750mm from the FFL and the visitor end will be $\pm$ 1050mm from the FFL . The unit will be having the provision of $\pm$ 10mm Thk Clear glass fixed towards the unit with the help of approved SS Stud .The front area of the unit will be having the name displayed as "KADCO" made upof $\pm$ 18mm Thk Multi wood and finished with approved shade of paint finish . The unit will be fixed with all necessary hardware's etc. as required .(Location : Reception area )	No's	1.00		-
2	<b>Stair area Cladding :</b> Fabrication and installation of $\pm$ 8 mm Thk ply over the stair area finished with approved shade of paint finish ,m The plywood will be fixed above the wooden frame if required as per the design . The Frames will be screwed towards the existing civil wall area and plywood will be screwed upon the frame and ply will be finished with approved shade of paint .	SqFt	80.00		-
TOTAL FOR JOINERY WORKS :					-
E	FURNITURE WORKS				
1	<b>LINEAR WORKSTATIONS</b> Modular workstations : The frame is made out of 1.5mm and 1mm thick CRCA sheets. All the Frames are duly epoxy powder coated to any colour to a thickness of 50-60 microns. The horizontals and verticals of the frames are welded together at different heights so as to facilitate the wire management system running within the frame. The frame has various slots at different heights for fixing of table top, gable end brackets, and tiles. All the frames are joined together by means of bolts and nuts. They can be attached to form a 2-way, 3-way or a 4-way configuration. Possibility to join the frames at 90 degrees. All frames are fixed with aluminium trims. These trims are finished in an epoxy powder coating finish. The connectors at the top of the frames are made out of ABS plastic of a closest matching colour to the trims confirming to ASM standards. All the frames are fitted with M8 levelling bolts with a 50mm broad base. Technical Specifications of raceway and Skirting: The raceway and skirting are made out of 0.8 thick CRCA sheet. These tiles are fixed to the frame. The tiles can be provided with fabric board/White board as required. All table tops are made up of 25mm Plain particleboard with post forming of 0.8mm laminate on top and 1.0mm balancing laminate at bottom. Legs are made of 25mm Pre-laminated particleboard with PVC edge banding .Specially designed powder coated M.S. brackets fixed to the partition frame support the table tops and gable ends. Dimension:-Table top of size 900x600mm with side and front partition up to a height of 1100mm. 9nos of unit is having Mobile pedestal of size 400mm x 450mm x 710mm BOARD, .Also $\pm$ 10mm Thk Plain glass will be fixed with D brackets towards the existing furniture for separating the Table top as per the design . ( CPU trolley will be provide for 5 Nos of worksatation )	No's	14.00		-

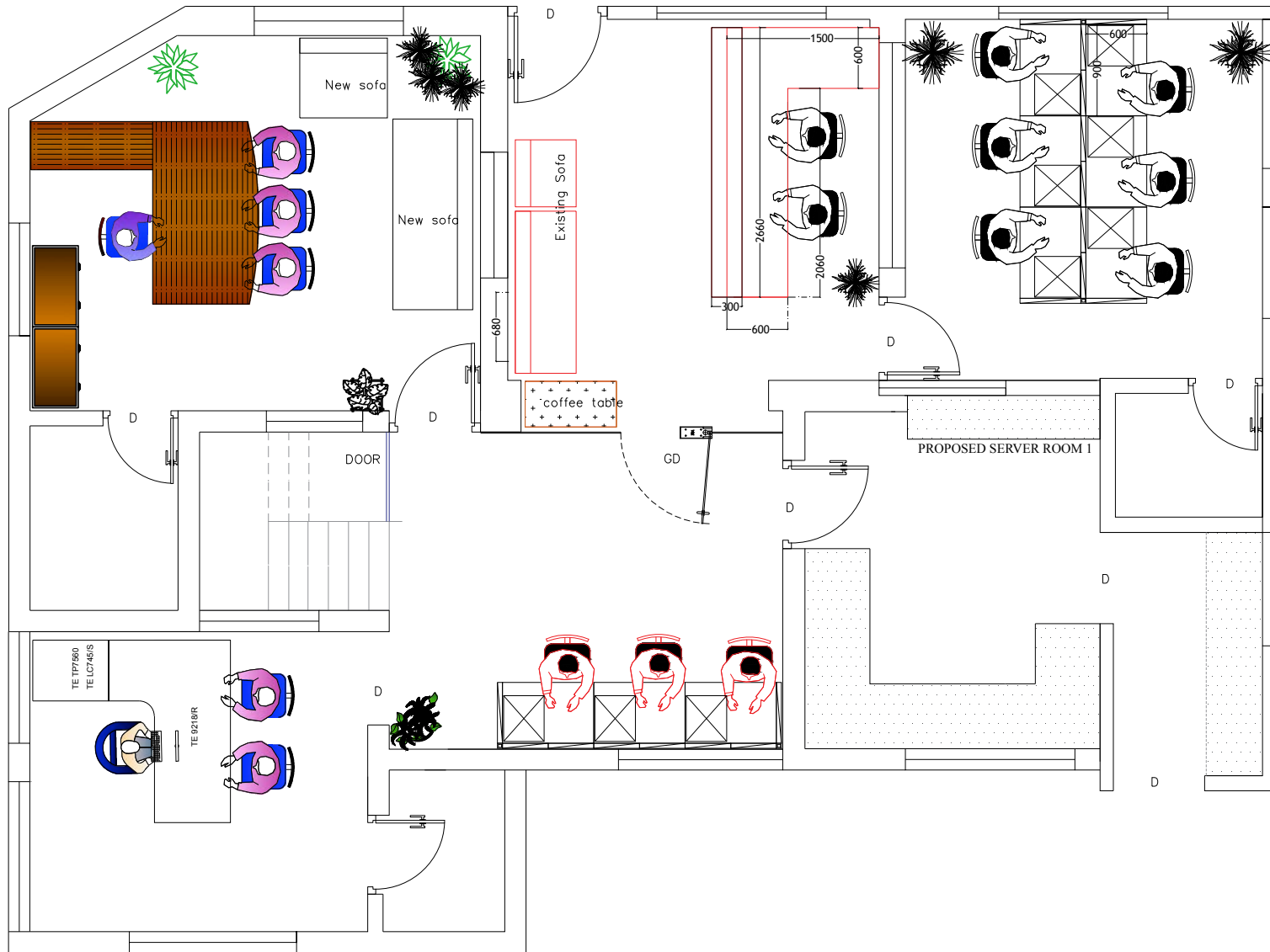
2	PENTA WORKSTATIONS				
	<p>Modular workstations : The frame is made out of 1.5mm and 1mm thick CRCA sheets. All the Frames are duly epoxy powder coated to any colour to a thickness of 50-60 microns. The horizontals and verticals of the frames are welded together at different heights so as to facilitate the wire management system running within the frame. The frame has various slots at different heights for fixing of table top, gable end brackets, and tiles. All the frames are joined together by means of bolts and nuts. They can be attached to form a 2-way, 3-way or a 4-way configuration. Possibility to join the frames at 90 degrees. All frames are fixed with aluminium trims. These trims are finished in an epoxy powder coating finish. The connectors at the top of the frames are made out of ABS plastic of a closest matching colour to the trims confirming to ASM standards. All the frames are fitted with M8 levelling bolts with a 50mm broad base. Technical Specifications of raceway and Skirting: The raceway and skirting are made out of 0.8 thick CRCA sheet. These tiles are fixed to the frame. The tiles can be provided with fabric board/White board as required. All table tops are made up of 25mm Plain particleboard with post forming of 0.8mm laminate on top and 1.0mm balancing laminate at bottom. Legs are made of 25mm Pre-laminated particleboard with PVC edge banding .Specially designed powder coated M.S. brackets fixed to the partition frame support the table tops and gable ends. Dimension:-Table top of size 1200x550mm &amp; 900x1200mm (Curved )with side and front partition up to a height of 1100mm. Mobile pedestal of size 400mm x 450mm x 710mm BOARD, .Also ± 10mm Thk Plain glass will be fixed with D brackets towards the existing furniture for separating the Table top as per the design .</p>	No's	4.00		-
3	CONFERENCE TABLE				
	<p>Supply and installation of Conference Table Made with ±25mm thick Top prelaminated particle board with 2/ 0.8mm edge binding under structure Size 2400mmx1000mm , The Table leg is made of ±25mm Thk prelaminated particle board with factory press . The exposed edges are pasted with 1-.8 mm thk edge banding of approved shades . The legs are fixed at regular intervals with necessary hardware's such as clamb , screws etc as required . (size : 2400 x 1000x 750 mm )</p>	No's	1.00		-
4	LOW HEIGHT STORAGE UNIT				
	<p>Supply and installation of Storage Made with ±25mm thick Top prelaminated particle board with 2/ 0.8mm edge banding with ±18mm thk shutters and back panel is made of ±9mm thk board . The unit will be having all necessary hardware's such as Hinges , Handles and Lock etc as required . (Size : 1900 x 450 x 750 mm )( Location : Conference room)</p>	No's	1.00		-
5	CHAIRMAN TABLE				
	<p><b>CHAIRMAN TABLE</b> :Supply and installation of STM-2080 of size (2000x1625x750mm )table with overall dimension. The table top should be of 45mm Thk with full Germany melamine in Wallis plum and shadow wall . The side cabinet of 1200x450x690 with openable shutters with soft closing hinges and the pedestal with ball bearing of size 400x485x665 mm .</p>	No's	1.00		-
6	MD EXECUTIVE TABLE				
	<p>Modular top with 25mm particle board with melamine coating. Top 25mm Nyatoh(teak) with duck nose and 0.35mm side lamination edging.All vertical legs 16mm dark grey with 0.3mm dark grey PVC edging. Dimension of 1800mm L * 600mm W * 750mm ,with side cabinet )(1050X420X690MM) Mobile pedestal- 21(400X485X665MM)</p>	No's	1.00		-

7	PM EXECUTIVE TABLE				
	<b>PM TABLE</b> :L shaped work station with grommet for wire management & side cabinet . the work station of Magony shade with top size 1500x750x600x760mm, thickness of 25 mm, laminated on both sides & melamine coating for water , heat & scratch resistance. The side panel on metal frame with adjustable legs (as per the photo attached) & front modesty panel of 16 mm thick. Mobile pedestal of dimension 400x545x600mm with central locking & metal handles. The side cabinet of size 745x430x735 with openable shutters .	No's	1.00		-
8	ACCOUNTANT & CONFERENCE CHAIR				-
	Executive Chair 1-Ergonomically designed executive Chair made up of fabric finishing with adjustable type head-rest made of PU foam with Polypropylene cover at back . Seat made up of 12mm hot pressed plywood with moulded PU Foam , Density 45 kg/m <sup>3</sup> with size 470 ±10mm (W), 460 ±10mm(D)& 70 ±10mm(T). Back seat with Poly propylene Structure with Mesh & PU foam with Poly propylene cover at back of size 500 ±10mm (w),780 ±10 mm(H). Fixed arm rest made up of poly propylene. Over all dimension shall be 1250mm H X 720 mm W X 720 mm D. Mechanism with Centre Tilt, Seat & Back are fixed together and the whole structure moves together in one direction with Upright position Lock. The under structure of Revolving Pedestal with Chrome plated Steel base with 3 piece bellow. Glass injected nylon twin wheel pin castors 5 no's of 50 mm dia at supports. Weight of chair approximately 17 kg	NoS	2.00		-
9	EXECUTIVE CHAIRS				-
	Supplying of ergonomically designed Revolving Chair to be made of High Resilience polyurethane foam , Density -32 kg/m <sup>3</sup> , H-20 covered with netted fabric & Back made of metal frame duly covered with mesh fabric .The arm rest shall be made of with polypropylene. Pneumatic height adjustment should be there with travel of 9, +/-3 cm. Base should be Steel insert with Polypropylene Hub Cap with glass injected nylon twin wheel castors Of 50 mm dia.Dimension-1050mm(H)X715mm(W)X715mm(D).	NoS	30.00		-
10	VISITOR CHAIR				-
	Supplying of Visitors Chair: Ergonomically designed seat to be made of High Resilience polyurethane foam , Density -32 kg/m <sup>3</sup> , covered with netted fabric & Back made of metal frame duly covered with netted fabric . The Arm rests are to be made of Polypropylene. Mounted on tubular structure of with chrome plated of 70 gsm.Dimension-80mm(H)X600mm(W)X600mm(D).	NoS	5.00		-
11	SOFA				-
	Three Seater sofa : Material of backrest cover Rexin and Material of frame for seat and Backrest Moulded plywood of 12±1mm thickness Material of Seat cover rexin Cover of Foam on armrest rexin Finish Chrome Plate Size Density of foam for backrest ±5 (Kg/Cub M) 65 Density of foam for seat ±5 (Kg/Cub M) 66 (Size 1880x788x635)	Nos	2.00		-
	Single seater sofa : Material of backrest cover Rexin and Material of frame for seat and Backrest Moulded plywood of 12±1mm thickness Material of Seat cover rexin Cover of Foam on armrest rexin Finish Chrome Plate Size Density of foam for backrest ±5 (Kg/Cub M) 65 Density of foam for seat ±5 (Kg/Cub M) 66 (Size 864x788x635)	Nos	1.00		-

		TOTAL FOR FURNITURE WORKS :			-
F	BLINDS WORKS				
1	<b>Vertical blinds</b> :Providing and fixing vertical blinds Vista Leveller Make with 100/89 wide imported superior polyester base fabric vanes with scotch guard application as per approved sample, make of Vista leveller or equivalent and the ranges of louver shall be in select and classic. The vertical blinds shall have a head rail of extruded anodized high strength aluminium alloy or equivalent. End control unit consists of reduction gearbox for a very smooth operation of the blind. This unit consists of planetary gear in the outer housing, four small transmission gears fitted in the middle assembly and a end receiving gear attached to central sprocket unit. Tilter chain is made of plastic beads moulded on thick polyester card. The pitch of the beads is $\pm 6$ mm. The end control unit have the facility to rotate the louver by 180 degrees. ( Location : FOR ALL WINDOWS )	SqFt	570.00		-
		TOTAL FOR BLINDS WORKS :			-
G	EXTERIOR WORKS				
1	<b>Truss Works</b> : Fabrication and installation of Jindal / Blueshine truss works of approved shades with all necessary supports . The approved sheet of of $\pm .35$ will be screwed towards $\pm 2 \times 1.5$ square pipes and pillars are made upof Square tubes . All the pipe joints will be welded and fixed together with necessary tools and safety equipment's. The Exposed pipes are finished with approved shade of Epoxy painting as per the design . Their will be $\pm 6$ "slading towards the approved area for attain the slop , The slopped edge will be having the provision of Core pipe / Thuvaan for the easy movement of the rain water and will be fixed with all necessary supports etc as required . The Horizontal post will be placed at $\pm 1.5$ mtr interval and verticals are placed at $\pm 2.5$ mtr intervals as per the site conditions . The verticals will be bolted / Concreted towards floor for necessary supports .The rate is inclusive of all scaffoldings , Safety equipment's etc as required. (Location : Front area , Side Area & Generator area )	SqFt	920.00		-
		TOTAL FOR EXTERIOR WORKS :			-
H	ELECTRICAL WORKS				
	<u>MEDIUM VOLTAGE SWITCHGEAR &amp; DISTRIBUTION BOARDS:</u>				
1	Supply and fixing for change over switch with enclosure	Nos	2.00		-
2	Comprising of the following ( DB ) :				
a)	32 Amp FP RCBO - 1 No.				
b)	10 / 20 Amp SP MCB - 12 Nos				
c)	4 Way TPN Distribution Board completed with Internal wiring	Nos	2.00		-
3	Providing and Fixing of MCB Distribution board				
	Comprising of the following ( 7.5 Kva DG ) :	Nos	1.00		-
a)	63 Amps DP MCB - 1 No.				
b)	32 Amp DP MCB - 2 Nos				
c)	8 Way SPN Distribution Board completed with Internal wiring				
	<u>CONDUIT WIRING:</u>				
1	Wiring circuit 2 x 1.5 sq.mm. wire with 1.5 sq.mm. earthing wire from LDB to Switch board.	Mtr	350.00		-
2	Wiring Lighting circuit 2 x 2.5 sq.mm. wire with 1.5 sq.mm. earthing wire from LDB to Switch board.	Mtr	450.00		-
3	Wiring Power circuit 2 x 4.0 sq.mm. wire with 1.5 sq.mm. earthing wire from PDB to A/C & Power Plug Point.	Mtr	150.00		-
4	Providing and Fixing of 5/15 Amp Switch – Socket with Plate and Box for Power Point.	Nos	7.00		-
5	Providing and Fixing of 1 No. Plate type 3 Nos 5 Amp Switch + 2 No. 5 Amp Socket	Nos	30.00		-
6	Providing and Fixing of 1 Nos 5 Amp Switch + 1 Nos 5 Amp Socket with back box and face plate .	Nos	7.00		-
7	Providing and Laying of 3 C X 4.0 Sqmm Copper flexible Wire .	Mtr	80.00		-
8	Providing and Laying of 3 C X 6 Sqmm Copper flexible Wire .	Mtr	20.00		-

	<b>SYSTEM WIRING</b>				
1	Providing and Laying of 2pair telephone wire through casing capping.	Mtr	440.00		-
2	Providing and Laying of 10 pair telephone wire through casing capping.	Mtr	20.00		-
3	Supply and fixing Rj 11 for telephone connecting for workstation.	Nos	10.00		-
4	Providing and Laying HDMI Cable from the exiting TV unit through floor with necessary protections and user end will be dropped in the existing Conference table (Approx. 4 mt)	Nos	1.00		-
5	Supply and fixing of 50 Pair Krone with Krone box finished with necessary crumbing etc as required in the designated area as per the design.	Nos	1.00		-
	<b>MISCELLANEOUS :</b>				-
1	Providing & Fixing of 25mm x 3mm x 300 mm Copper Busbar with Accessories.	Nos	2.00		-
2	Supply and laying 10 swg copper for earthing	Mtr	80.00		-
3	Providing and Fixing of Logical Earthing System for Computer Installing with 2' x 2' x 6mm Copper Earth Plate with required material like Charcoal Salt, Manhole Cover, Watering arrangement .(For DG Set)	Nos	1.00		-
4	<b>7.5KVA GENERATOR</b>				
	Supply and installation of 7.5 kva Diesel Generator sets .ENGINE:, 18 BHP, 2 Cylinder,A1 Class Governing, Liquid Cooled, Radiator with Built-In expansion volume tank and relevant Hoses with Starter motor, Battery Charging Alternator, Pusher fan, Three Stage Air Cleaner consisting of Pre-Cleaner, Oil-Bath wire mesh and paper filter element. Gauges: RPM meter cum Hour meter, Ammeter, Water Temperature Gauge, Lube-Oil Pressure Gauge, Battery Charging Indicator, Ignition Switch, Water pump with Unitized seal, Flywheel Housing, Fan Guard etc. ALTERNATOR: LS or Equivalent make subject to availability Brushless, self-excited, self-regulated Alternator giving an output of 7.5 KVA / 6 KW, 230V, Single phase, 50 Hz at 1500 rpm, IP 23 S enclosure, class of insulation F/H for stator/rotor conforming to IS: 4722.STANDARD CONTROL PANEL: Totally enclosed sheet metal control panel as per the KSEI spec, suitable for the above alternator ,FUEL TANK: MS Fuel Tank having capacity to run minimum of 8 hours. BATTERIES: SF (EXIDE) make 12 V battery. ACOUSTIC ENCLOSURE: CPCB approved Enclosure suitable for the above set.	Nos	1.00		-
5	<b>MOBILIZATION OF DG</b>				
	Mobilization of DG as per the proposed area includes the loading , Unloading etc as required as per the site condition	Nos	1.00		-
	<b>TOTAL FOR ELECTRICAL WORKS :</b>				-
I	<b>CCTV WORKS</b>				
1	HD 720P IR Bullet Camera, 1 MP CMOS sensor, 3.6mm fixed lens, IR Range up to 20 mtrs, Minimum Illumination 0.1 lux @ F1.2, AGC on, DNR, IP 66, Plastic Housing.	Nos	3.00		-
2	HD 720P IR Dome Camera, 1 MP CMOS sensor, 3.6mm fixed lens, IR Range up to 20 mtrs, Minimum Illumination 0.1 lux @ F1.2, AGC on, DNR, IP 66, Plastic Housing	Nos	7.00		-
3	16 Channel Tribrid DVR, H.264 & Dual-stream video compression Tribrid DVR - Supports Methodex HD Cameras, analog and IP camera Full channel@720P resolution real-time recording, HDMI and VGA output at up to 1920×1080P resolution, Supports 1 hard disk with up to 6TB capacity, Supports 2 Alarm in and 1 Alarm out, Supports 16-ch synchronous playback at up to 720P resolution (Metal enclosure)	Nos	1.00		-
4	Supply and installation of 18.5" LED Monitor	Nos	1.00		-
5	Supply and installation of 2TB Western Digital Surveillance Hard Disc	Nos	2.00		-
6	Supply and installation of 5 AMPS SMPS	Nos	3.00		-
7	Cabling Charges using RG 6 and 2 Core cable for power with ISI marked Conduits	Mtr	300.00		-
	<b>TOTAL FOR CCTV WORKS :</b>				-

J	VIDEO CONFERENCING				
1	Supply and installation of 55 inch 4K UHD Hospitality TV with all necessary accessories etc as required . The unit will be placed in the designated area as per the design . The TV unit will be placed in the designated area with all necessary supports etc as required . The TV unit will be having the warranty of 3 years from the date of supply .	Nos	1.00		-
2	Supply and installation of BENQ WEBCAM DVY21 of approved with all necessary wirings and supports etc as required above the TV unit as per the design .	Nos	1.00		-
3	Supply and installation of KONFTEL EGO speaker phone in the designated area for the compact and portable conferencing purpose .	Nos	1.00		-
4	Installation charge	LS	1.00		-
TOTAL FOR VC WORKS :					-
K	NETWORK CABLING				
	Providing and laying of CAT-6 Cable through casing capping from the Accounts room upto server area as per the design . The casing capping will be fixed towards wall with adequate finish as required . The cable will be marked with ferrule as per the requirement.	Mtr	160.00		-
	Supply and fixing of IO networkig keystone jack and face plate in the user end as per the design with all necessary termination etc as required .	Nos	5.00		-
TOTAL FOR NETWORK WORKS :					-
TOTAL VOG					-
<a href="#">GST@18%</a>					-
GRAND TOTAL					-
Amount (INR):					



GROUND FLOOR PLAN



KERALA  
ARTISANS' Development  
Corporation Ltd  
A Kerala Government Undertaking

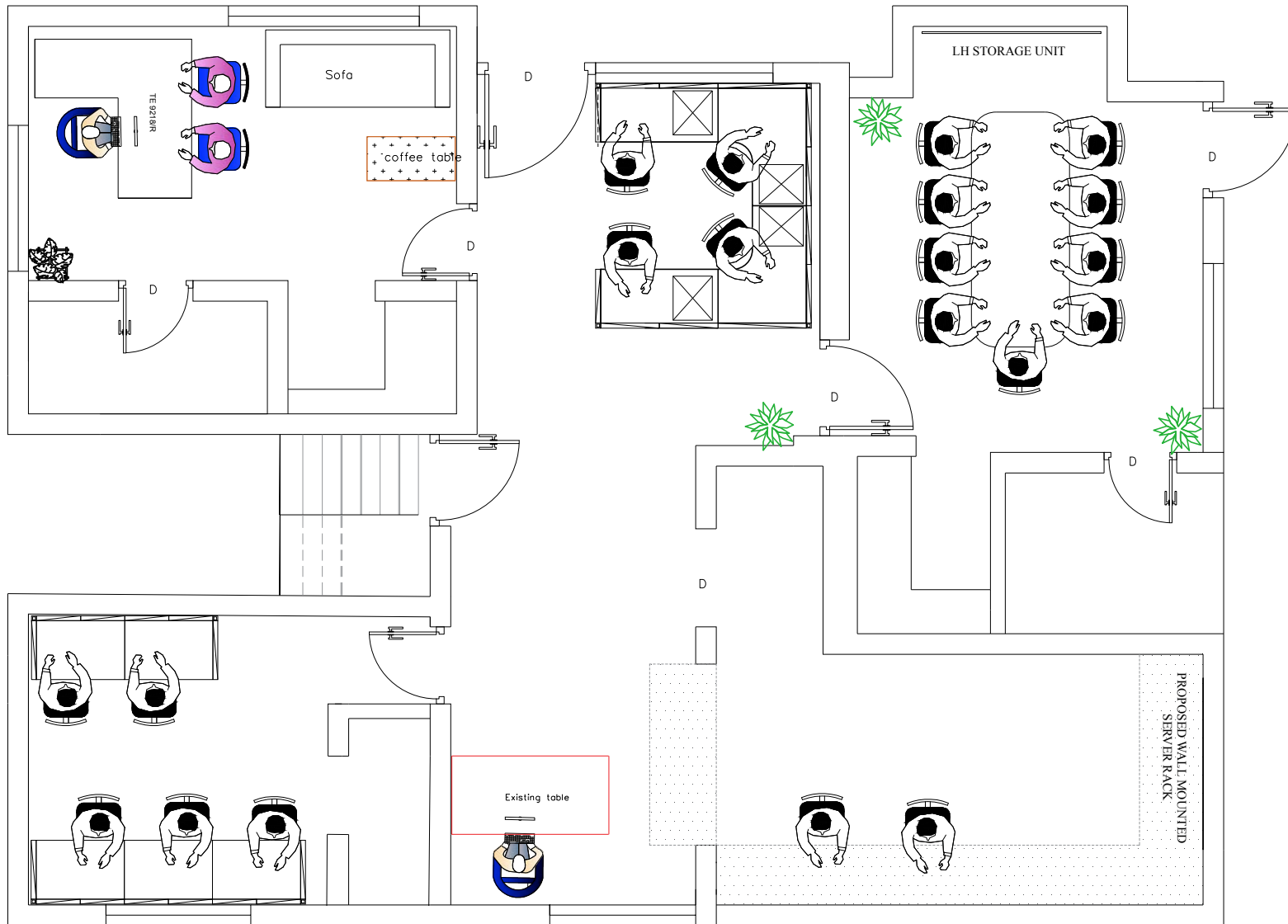
KADCO HEAD OFFICE AT  
THIRUVANANTHAPURAM

AR.NAFIH  
ARCHITECTURE | INTERIOR. | ECO PLANNING

KOCHI - ALAPPUZHA - PERUMBAVOOR

+91 9400321158. +91 7510696969





FIRST FLOOR PLAN



KERALA  
ARTISANS' Development  
Corporation Ltd  
A Kerala Government Undertaking

KADCO HEAD OFFICE AT  
THIRUVANANTHAPURAM

AR.NAFIH  
ARCHITECTURE | INTERIOR. | ECO PLANNING

KOCHI - ALAPPUZHA - PERUMBAVOOR

+91 9400321158. +91 7510696969

## നോട്ടീസ്

No:KADCO/HO/E4/RENO/04/2019

തീയതി:01.01.2021

സ്വീകർത്താവ്,  
കാഡ്കോ എംപാനൽ ആർട്ടിസാൻമാർ/ യൂണിറ്റുകൾ

ഇതോടൊപ്പം ഉള്ളടക്കം ചെയ്തിട്ടുള്ള ടെണ്ടർ നോട്ടീസിന്റെ ഷെഡ്യൂൾ പ്രകാരം എല്ലാ ആർട്ടിസാൻമാർ/യൂണിറ്റുകളിൽ നിന്നും കാഡ്കോയുടെ പുതിയ ഹെഡ് ഓഫീസ് നവീകരണത്തിനായി ടെണ്ടർ ക്ഷണിക്കുന്നു.

ടെണ്ടർ തുറക്കുന്ന തീയതി & സ്ഥലം 18.01.2021, സമയം 2.00 pm, ഹെഡ് ഓഫീസ്  
ടെണ്ടർ ലഭിക്കേണ്ട അവസാന തീയതി : 18.01.2021 11.00 pm  
ടെണ്ടർ കാലാവധി : 2 മാസം

ഹെഡ് ഓഫീസിലും/റിജിയണൽ ഓഫീസുകളിലും നിന്നും ടെണ്ടർ ഫോറങ്ങൾ ലഭ്യമാക്കുന്നതാണ്. വിശദവിവരങ്ങൾ കാഡ്കോയുടെ വെബ് സൈറ്റിൽ ലഭ്യമാണ്.

Sd/-  
മാനേജിംഗ് ഡയറക്ടർ

- പകർപ്പ്
- 1) പ്രോജക്ട് മാനേജർ
  - 2) റീജിയണൽ ഓഫീസർ (i/c) /  
ഡെവലപ്പ്മെന്റ് ഓഫീസ് ഇൻചാർജ്ജ്
  - 3) നോട്ടീസ് ബോർഡ് /വെബ്സൈറ്റ്

## SHORT TENDER NOTICE

No. KADCO/HO/E4/RENO/05/2019

Department: KADCO

Sealed tenders are invited for the Interior furnishing and Supply of stores of the New Head Office of Kerala Artisans' Development Corporation, Trivandrum.

The envelopes containing the tender should bear the superscription "the Interior furnishing and Supply of stores of the New Head Office of KADCO, Trivandrum" and should be addressed to Managing Director, KADCO, Trivandrum.

Last date for receipt of tenders will be 18.01.2021 at present Head Office, Trivandrum Late tenders will not be accepted. The tenders will be opened at 2.00 pm on 18.01.2021 in the presence of such of the tenderers or their authorized representatives who may be present at that time.

Intending tenderers may download the form from website or obtain the request to tender forms from Regional Office /Development Office/ Head Office. The tender forms are not transferable. Sale of tender forms will be closed at 12.00 pm on 15.01.2021.

Place: Trivandrum

Date: 01.01.2020

Sd/-  
Managing Director